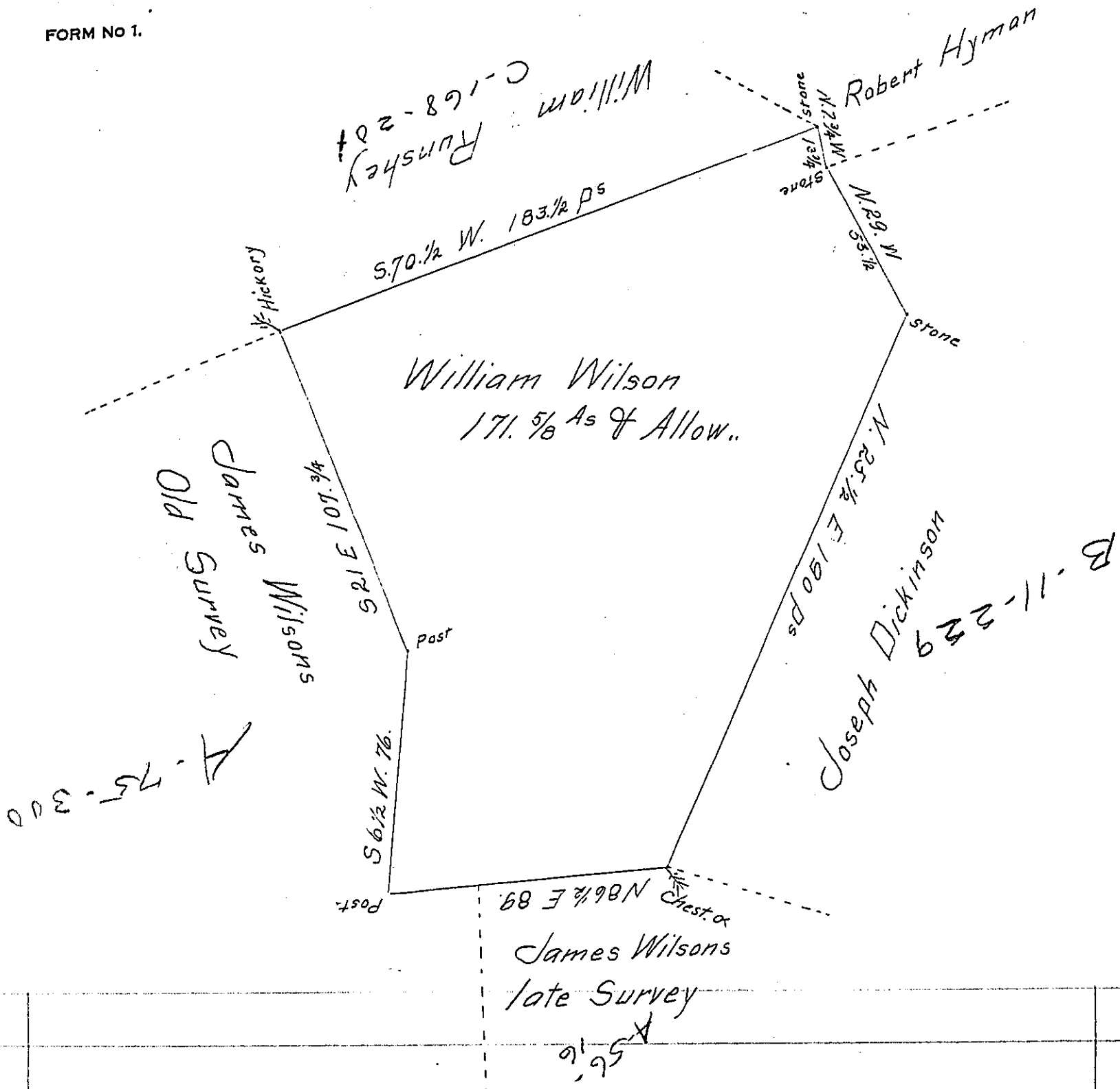


FORM NO 1.



A Draught of a Tract of Land situate in Salisbury Township Lancaster County Containing 171.5/8 As and the Allowance of six per Cent for Roads &c. Surveyed agreeable to the Old lines & Corners the 2^d Day of September A.D. 1790 for William Wilson By Virtue of a Warrant Dated the 21st Day of June A.D. 1738.

Pr Henry Ream D. Sr.
To Daniel Brodhead Esqr.
Surveyor General

IN TESTIMONY that the above is a copy of the original remaining on file in the Department of Internal Affairs of Pennsylvania, made conformably to an Act of Assembly approved the 16th day of February, 1833, I have hereunto set my Hand and caused the Seal of said Department to be affixed at Harrisburg, this 25th day of October 1907

Henry Howard
Secretary of Internal Affairs.